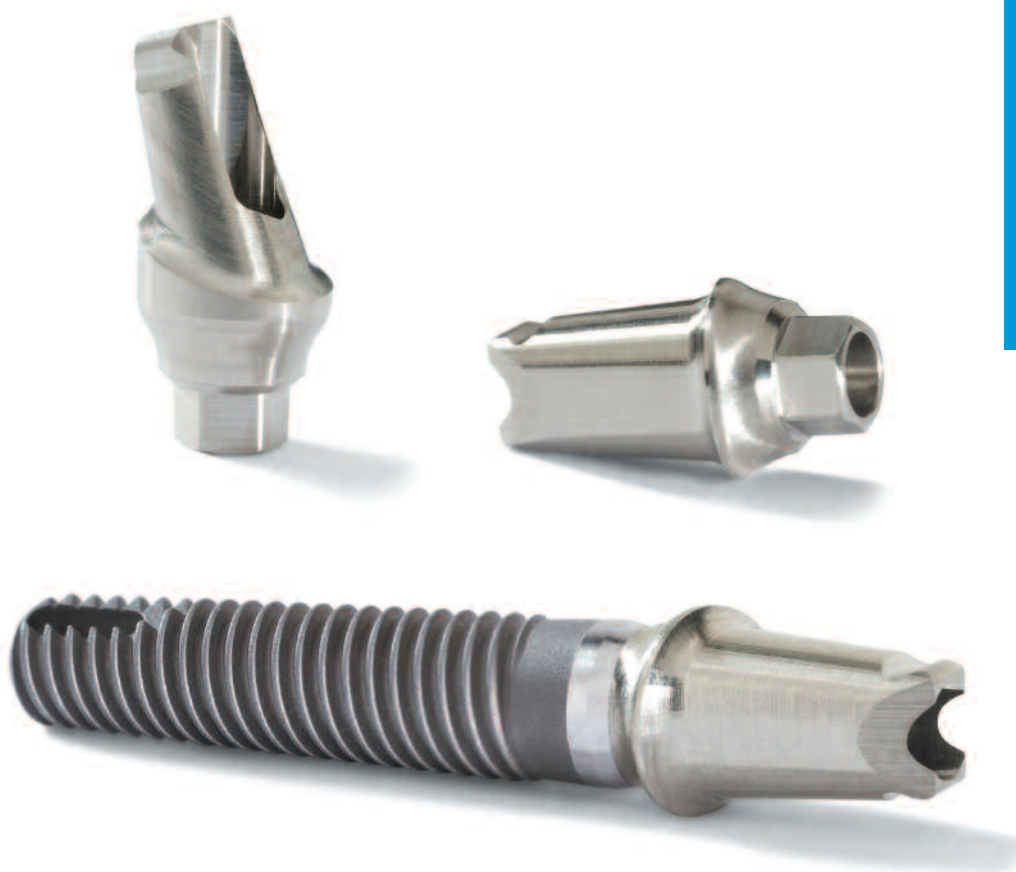




Hex-Lock™ Contour Abutments



An off-the-shelf solution for on-the-mark results.

Hex-Lock Contour Abutments from Zimmer Dental are an “off-the-shelf” solution for immediately fitting the diversity of patients’ needs. Designed to be used with our trusted *Tapered Screw-Vent®* and *Screw-Vent®* Implant Systems for cement-retained restorations, Hex-Lock Contour Abutments simplify the restoration process, save time for clinicians and technicians, and offer impressive versatility.

Hex-Lock Contour Abutments feature:

- Prepared margins to minimize preparation time
- Snap-on impression caps for easy impressions
- Plastic copings to aid in creating provisional and final restorations
- A variety of cuff heights and emergence profiles
- Reduced facial margins that mimic the profile of soft tissue; minimizing the potential for metal being exposed if tissue recedes and providing superior esthetics
- Abutment collars that are contoured below the margin, allowing space for soft tissue around the implant without compromising strength or esthetics
- The option to be used in either one-stage or two-stage surgical protocols
- Zimmer Dental’s proprietary internal hex with friction-fit connection virtually eliminates micromovement; ensuring a stable connection

¹ Binon P. The evolution and evaluation of two interference-fit implant interfaces. *Postgraduate Dent.* 1996;3:3-13.

² Mihalko W, May T, Kay J, Krause W. Finite Element Analysis of Interface Geometry Effects on the Crestal Bone Surrounding a Dental Implant. *Implant Dent.* 1992;3:212-216.



The convenience you want, the flexibility you need.

Hex-Lock Contour Abutments feature a pre-defined offset margin that is lower on the buccal aspect and higher on the lingual aspect. The abutments are contoured below the margin to create space for soft tissue without compromising strength. To resist rotational forces, the abutment's cone is non-cylindrical and features a vertical groove on the lingual aspect. Cuff height options include 1mm, 2mm and 3mm (buccal measurement) on the straight abutment and 1mm and 2mm on the 17° angled abutment.



Contour Restorative Components

The *Hex-Lock* Contour Abutment system includes all components needed for the restoration process.

- Color-coded snap-on impression caps allow for simple abutment-level impressions
- Provisional copings help in creating a provisional crown to shape gingival tissue while the final restoration is being fabricated
- Analogs and waxing copings assist the laboratory in fabrication of the final restoration
- Abutment try-ins are autoclaveable and can be used in the laboratory or in the clinician's office
- These components can also be used with *Zimmer*® One-Piece Implants

Color Coding for Contour Impression Caps and Contour Abutment Analogs

Color	Emergence Profile Diameter
◆ Light Blue	3.5mm (Zimmer One-Piece Only)
◆ Tan	4.5mm
◆ Rose	5.5mm
◆ Yellow	6.5mm

Take a closer look



Fig. 1 Hex-Lock Contour Abutments



Fig. 2 Color-coded Contour Impression Caps

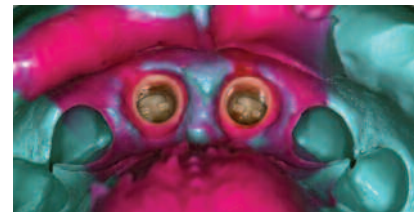


Fig. 3 Snap-on caps picked up in impression material



Fig. 4 Contour Abutment Analogs



Fig. 5 Contour Provisional Copings on Hex-Lock Contour Abutments



Fig. 6 Provisional restorations cemented into place

Clinical images courtesy of Paul Petrunaro, DDS, MS, FICD, FACD, DICOI. Individual results may vary.

To learn more about *Hex-Lock* Contour Abutments, please visit us online at www.zimmerdental.com, or to speak to a sales representative, call 800 854 7019.

To receive our eNews visit us at http://www.zimmerdental.com/news_eNewsletterSignUp.aspx

For more information about our Products and Educational Opportunities, contact us:

In the U.S. 800 854 7019
 To fax an order 888 225 2483
 Outside the U.S. +1 760 929 4300
 Australia +61 (0)2 9950 5444
 Canada +1 905 567 2073 or 1 800 265 0968

France +33 (0)1 45 12 35 35
 Germany +49 (0)761 1 56 47 0
 Israel +972 (0)3 6124242
 Italy +39 043 855 5573
 Spain +34 93 846 05 43



Zimmer Dental
 1900 Aston Avenue
 Carlsbad, CA 92008-7308
 USA

www.zimmerdental.com