



Which Systems are compatible with Zfx?

The Zfx construction components are compatible with the following implant systems:

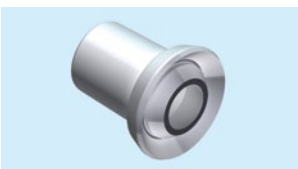
- × Biomet 3i Certain®
- × Biomet 3i Osseotite®
- × Astratech OsseoSpeed®
- × Camlog Screw Line®
- × Dentsply-Friadent Frialit-Xive®
- × Nobel Biocare Active®
- × Nobel Biocare Brånemark®
- × Nobel Biocare Multi-unit®
- × Nobel Biocare Replace®
- × Straumann Bone Level®
- × Straumann SynOcta®
- × Zimmer Tapered Screw Vent®
- × Zimmer SwissPlus®

Which components can be implemented?

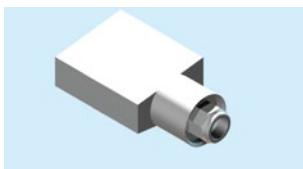
titanium base locked



titanium base unlocked



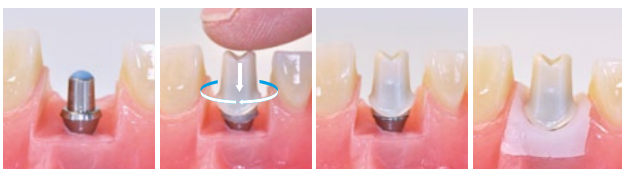
matchholder



screws



Sticking and finishing of tools



Designing with Zfx



Zfx GmbH
 Kopernikusstraße 27
 D-85221 Dachau
 Tel. +49 81 31 33 244 - 0
 Fax +49 81 31 33 244 - 10
 office@zfx-dental.com

www.zfx-dental.com

Your options at a glance

100EN_REV.3/12 ©2012 Zfx GmbH

Zahn success formula



Zahn success formula

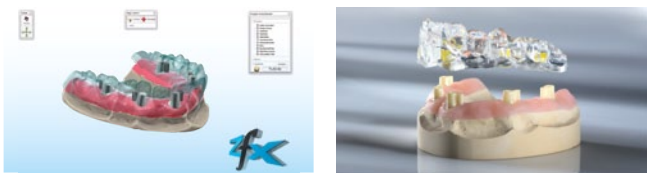




Which construction components are provided by the Zfx CAD Software?

NEW! The Zfx Revitalised packages

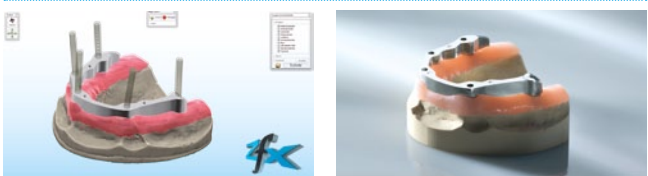
Separation attachment for removable dentures



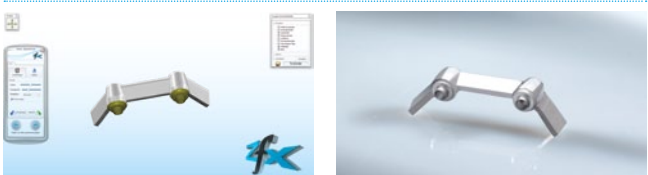
Stress breaker



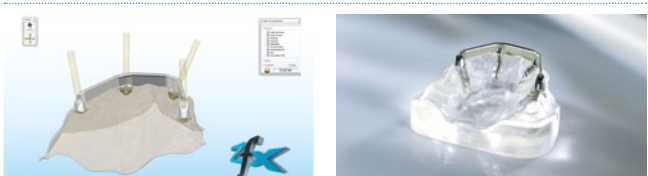
Direct screwed bars



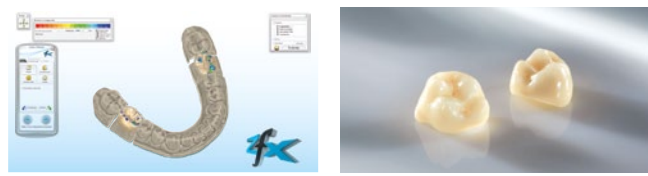
Dolder Bar



Hader Bar



Translucent full zirconium crowns



Ivoclar e.max | Full Ceramics



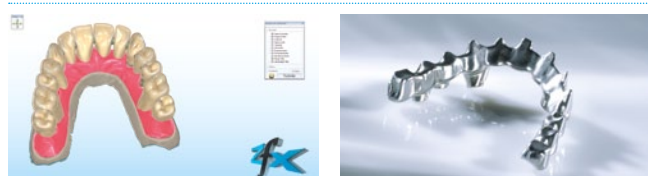
Hybrid constructions



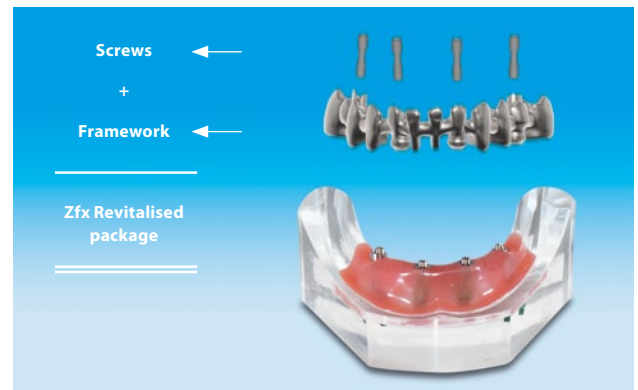
Telescopes



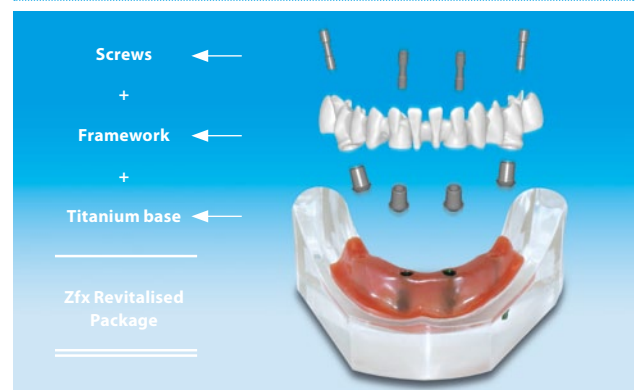
Toronto bridges



Zfx Revitalised package „Chrom-Cobalt“



Zfx Revitalised package „Zirkonium“



Benefits

- × all essential construction components in one package
- × one order number only
- × single orders keep off
- × frameworks up to 10 elements