

# Provisional Components

Sustainable Aesthetics



## Provisional Components' Advantages

### Ease of Use and Versatility

- Components can be immediately customized to a patient's anatomical profile
- Components are made of polymer material for easy preparation

### Prosthetic Flexibility

- Available for implant and abutment-level provisional restorations
- Available in internal and external hex connections

# BIOMET **3i** Provisional Components Offer Versatile Solutions For Patients Who Demand More Choices And Faster Results

## PreFormance® Provisional Components



## QuickBridge® Provisional Components



## Provide® Temporary Cylinders



## PreFormance Provisional Advantages

### PreFormance Post

- For use with cement-retained restorations
- Available in straight or 15° pre-angled for easy angle correction
- Smooth surface for easy provisional relining
- Flat side for anti-rotation



### PreFormance Temporary Cylinder

- Indicated for screw-retained restorations
- Knurled surface for mechanical retention of resin restorative material
- Available in hexed and non-hexed for single or multiple-unit restorations



# PreFormance® Provisional Components Case Study

By: Dr. Harold Baumgarten†, Philadelphia, PA

If you seek aesthetic implant level provisional restorations, PreFormance Provisional Components may be customized chairside or at the laboratory for specific contours and anatomic profiles.



**Fig. 1**

NanoTite™ Certain® Implant in place. The bone was profiled around the interface.



**Fig. 2**

A PreFormance Post was seated into the implant.



**Fig. 3**

The PreFormance Post was prepared intraorally to follow the gingival contours.



**Fig. 4**

The prefabricated crown shell was luted to the PreFormance Post.



**Fig. 5**

The provisional restoration was fabricated, occlusal and interproximal contacts were checked, adjusted accordingly and delivered to the patient.



**Fig. 6**

A periapical radiograph was taken of the provisional restoration.

†Dr. Harold Baumgarten has a financial relationship with BIOMET 3i, LLC resulting from speaking engagements, consulting engagements and other retained services.

## QuickBridge Provisional Advantages

### QuickBridge Provisional Components

- Provide a simple solution for the fabrication of multiple-unit, provisional restorations on definitive Low Profile Abutments
- All components are compatible with straight and angled Low Profile Abutments
- Ability to provisionalize chairside



# QuickBridge® Provisional Components Case Study

By: Dr. Pär-Olov Östman†, Falun, Sweden

Clinicians who prefer screw-retained definitive restorations but want the simplicity and cost effectiveness of cement-retained immediate or delayed provisional bridges, may find QuickBridge Provisional Components an ideal choice.



**Fig. 1**

Conical-shaped screw-retained abutments were placed with 20Ncm.



**Fig. 2**

QuickBridge Titanium Cylinders were placed.



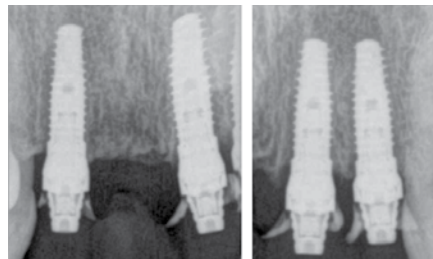
**Fig. 3**

QuickBridge PEEK Caps were snapped onto the Titanium Cylinders.



**Fig. 4**

A provisional restoration was fabricated chairside with a translucent template and Protemp™ 4 Garant (3M, ESPE).



**Fig. 7**

Postoperative radiographs. Three 15mm (L) NanoTite™ Tapered Implants were placed in the extraction sockets.



**Fig. 8**

A BellaTek® copymilled definitive prosthesis was fabricated and placed.

†Dr. Pär-Olov Östman has a financial relationship with BIOMET 3i, LLC resulting from speaking engagements, consulting engagements and other retained services.

## Provide Abutment Provisional Advantages

### Provide Abutment Temporary Cylinders

- Available for single- and multiple-unit restorations
- Contain horizontal grooves for mechanical retention of resin restoration material



# Provide® Abutment Temporary Cylinders

By: Dr. Pär-Olov Östman†, Falun, Sweden

Provide Abutment Temporary Cylinders are the answer to an aesthetic abutment-level provisional restoration. Originally, Provide Abutments were available with only a White Protection Snap Cap. Now, the addition of the Provide Temporary Cylinder allows clinicians to fabricate a cement-retained aesthetic provisional restoration.



**Fig. 1**

NanoTite™ Certain® Implants and Provide Abutments placed. Abutment screws were tightened to 20Ncm. An abutment level impression was then made and a soft-tissue master cast was fabricated.



**Fig. 2**

Multiple-Unit Provide Abutment Temporary Cylinders were placed onto the Provide Analogs.



**Fig. 3**

A vacuum-formed template was fabricated, filled with provisional resin restorative material and seated on the Provide Temporary Cylinders.



**Fig. 4**

Provide Abutment Temporary Cylinders were integrated into the resin material. The provisional restoration was trimmed, polished and returned to the clinician for delivery. The Provide Abutment Temporary Cylinder restoration was delivered with temporary cement.

# Ordering Information



| PreFormance® Post              | Certain® Internal Connection |                  | External Hex Connection |                  |
|--------------------------------|------------------------------|------------------|-------------------------|------------------|
|                                | Straight                     | Pre-Angled (15°) | Straight                | Pre-Angled (15°) |
| <b>3.4mm Seating Surface</b>   |                              |                  |                         |                  |
| 3.4mm(D) X 3.8mm(P) X 4.0mm(H) | IMPFP34                      | IMPAPF34         | MPFP34                  | MPAPF34          |
| 3.4mm(D) X 3.8mm(P) X 6.0mm(H) | IMPFP36                      | IMPAPF36         | MPFP36                  | MPAPF36          |
| 3.4mm(D) X 5.0mm(P) X 4.0mm(H) | IMPFP354                     | IMPAPF354        | N/A                     | N/A              |
| 3.4mm(D) X 5.0mm(P) X 6.0mm(H) | IMPFP356                     | IMPAPF356        | N/A                     | N/A              |
| <b>4.1mm Seating Surface</b>   |                              |                  |                         |                  |
| 4.1mm(D) X 5.0mm(P) X 4.0mm(H) | IPFP454                      | IPAPF454         | PFP454                  | PAPF454          |
| 4.1mm(D) X 5.0mm(P) X 6.0mm(H) | IPFP456                      | IPAPF456         | PFP456                  | PAPF456          |
| <b>5.0mm Seating Surface</b>   |                              |                  |                         |                  |
| 5.0mm(D) X 5.0mm(P) X 4.0mm(H) | IWFPF554                     | IPAPF554         | WPFP554                 | PAPF554          |
| 5.0mm(D) X 5.0mm(P) X 6.0mm(H) | IWFPF556                     | IPAPF556         | WPFP556                 | PAPF556          |
| <b>6.0mm Seating Surface</b>   |                              |                  |                         |                  |
| 6.0mm(D) X 6.0mm(P) X 4.0mm(H) | IWFPF664                     | IPAPF664         | WPFP664                 | PAPF664          |
| 6.0mm(D) X 6.0mm(P) X 6.0mm(H) | IWFPF666                     | IPAPF666         | WPFP666                 | PAPF666          |

## Provide® Abutment Temporary Cylinder



| Description            | Item No. |
|------------------------|----------|
| 4.8mm(P) Single-Unit   | PUA48S   |
| 4.8mm(P) Multiple-Unit | PUA48M   |
| 6.5mm(P) Single-Unit   | PUA65S   |
| 6.5mm(P) Multiple-Unit | PUA65M   |

## Low Profile Abutment QuickBridge® Provisional Components



| Description      | Item No. |
|------------------|----------|
| Cylinder and Cap | LPCQB    |
| Cap              | LPCQBCAP |



| PreFormance Temporary Cylinder | Certain Internal Connection |           | External Hex Connection |           |
|--------------------------------|-----------------------------|-----------|-------------------------|-----------|
|                                | Hexed                       | Non-Hexed | Hexed                   | Non-Hexed |
| 3.4mm(D) X 3.4mm(P)            | IMPFTC34                    | IMPFTC32  | MPFTC34                 | MPFTC32   |
| 4.1mm(D) X 4.1mm(P)            | IPFTC41                     | IPFTC42   | PFTC41                  | PFTC42    |
| 5.0mm(D) X 5.0mm(P)            | IWPFTC51                    | IWPFTC52  | WPFTC51                 | WPFTC52   |
| 6.0mm(D) X 6.0mm(P)            | IWPFTC61                    | IWPFTC62  | WPFTC61                 | WPFTC62   |

For More Information, Please Contact Your Local BIOMET 3i Sales Representative.



Global Headquarters  
4555 Riverside Drive  
Palm Beach Gardens, FL 33410  
1-800-342-5454  
Outside the U.S.: +1-561-776-6700  
Fax: +1-561-776-1272  
www.biomet3i.com



BIOMET 3i  
Dental Iberica S.L.  
WTC Alameda Park, Ed. 1, Planta 1ª  
Pl. de la Pau, s/n  
08940, Cornellà de Llobregat  
(Barcelona) Spain  
Phone: +34-93-470-55-00  
Fax: +34-93-371-78-49



Join Us



Follow Us



Watch Us



Download It

Certain, PreFormance, Provide and QuickBridge are registered trademarks and Providing Solutions – One Patient At A Time and NanoTite are trademarks of BIOMET 3i LLC. ©2014 BIOMET 3i LLC.

All trademarks herein are the property of BIOMET 3i LLC unless otherwise indicated. This material is intended for clinicians only and is NOT intended for patient distribution. This material is not to be redistributed, duplicated or disclosed without the express written consent of BIOMET 3i. For additional product information, including indications, contraindications, warnings, precautions and potential adverse effects, see the product package insert and the BIOMET 3i Website. For instructions go to: www.ifu.biomet3i.com.



ART1018  
REV C 04/14